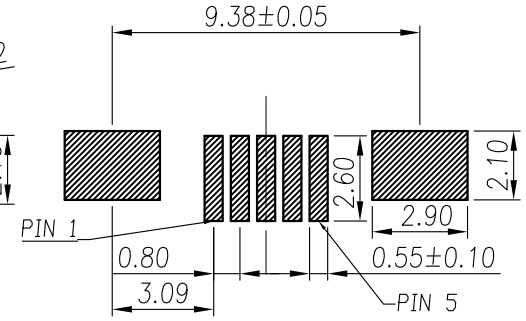
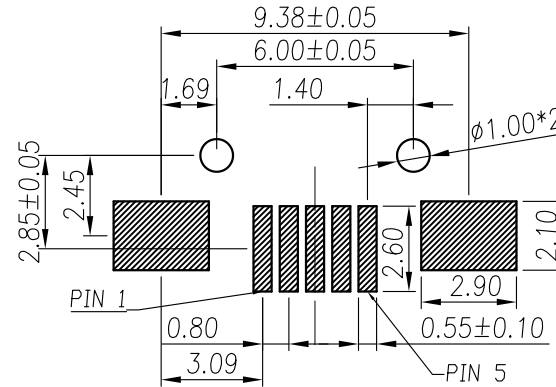
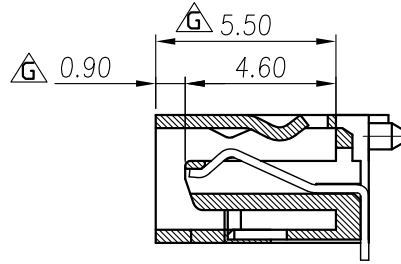
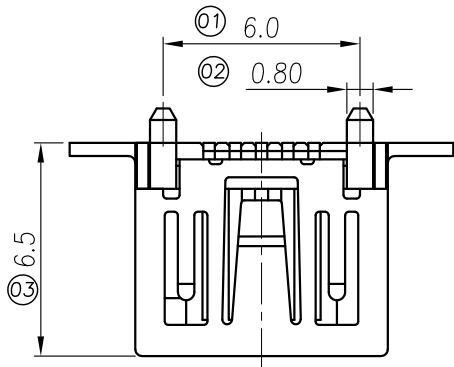


This document is the property of Nian-Yeong Corporation and is delivered on the express condition that it is not to be disclosed, reproduced or used, in whole or in part, for manufacture or sale by anyone other than Nian-Yeong Corporation without its prior consent, and that no right is granted to disclose or to use any information in this document.

CUSTOMER DRAWING

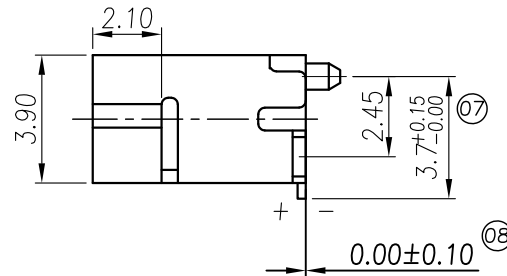
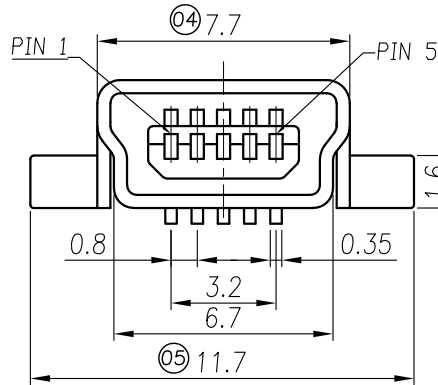
REV.	DESCRIPTION	APPVL. BY	DATE	ECN NO.
E	MODIFY DRAWING	Fido Weng	15/07/10'	ECN10073
F	ADD NEW PART NO. IN TABLE A	Fido Weng	15/02/11'	ECN11016
G	CHANGE DIM. ADD MATERIAL TYPE	Emily Suen	14/10/11'	
A	變更MU-05F4-67 線種方式	Emily Suen	07/06/12'	



RECOMMENDED PCB LAYOUT

WITHOUT POST

RECOMMENDED PCB LAYOUT

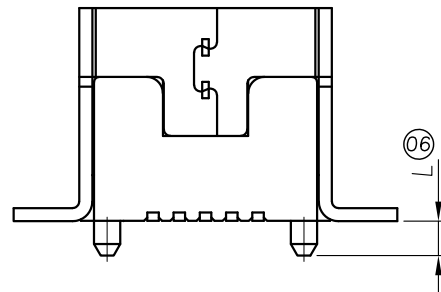


1. MATERIAL:

- 1-1. Housing: LCP E130i
- 1-2. CONTACT: PHOSPHOR BRONZE C5191
- 1-3. SHELL: BRASS C2680
- 1-4. CAP: LCP E130i

2. PLATING:

- 2-1. CONTACT: CONTACT AREA: SEE TABLE A
SOLDER AREA: MATTE TIN 60u"
UNDERPLATED: SEE TABLE A
- 2-2. SHELL: SEE TABLE A



MU-05F4-53 MU-05F4-46 MU-05F4-66 WITH POST	MU-05F4-55 WITHOUT POST	MU-05F4-67 WITH POST & 2面貼 MYLAR	

TABLE A

MU-05F4-81-10	NICKEL 60u"	GOLD 10u"	1.05	MATTE TIN 100u"
MU-05F4-67	NICKEL 200u"	GOLD 30u"	1.05	NICKEL 100u"
MU-05F4-66	NICKEL 60u"	GOLD 10u"	0.65	NICKEL 100u"
MU-05F4-46	NICKEL 60u"	GOLD 10u"	1.05	NICKEL 100u"
MU-05F4-53	NICKEL 200u"	GOLD 30u"	1.05	NICKEL 100u"
MU-05F4-55	NICKEL 60u"	GOLD 10u"	N/A	NICKEL 100u"
PART NO.	UNDER PLATED	CONTACT AREA	L	SHELL PLATED

DRAWN	Jen Xie	APP'D	Emily Suen	UNIT	mm	TOLERANCE		NIAN YEONG ENTERPRISE 年永實業有限公司	TITLE	MiniUsb 5(F) 直立式SMT(加CAP)			SHEET	1/2
CHK'D	Emily Suen	SCALE	1:1	mm	.x ±0.20 .xx ±0.10 .xxx ±0.05 .xxxx ±0.03 ANGULA ±1°	PART NO.			SEE TABLE A	DWG NO.	QC3509	VERSION	H	

This document is the property of Nian-Yeong Corporation and is delivered on the express condition that it is not to be disclosed, reproduced or used, in whole or in part, for manufacture or sale by anyone other than Nian-Yeong Corporation without its prior consent, and that no right is granted to disclose or to use any information in this document.

CUSTOMER DRAWING

REV.	DESCRIPTION	APPL. BY	DATE	ECN NO.
A				
B				
C				

步驟一:

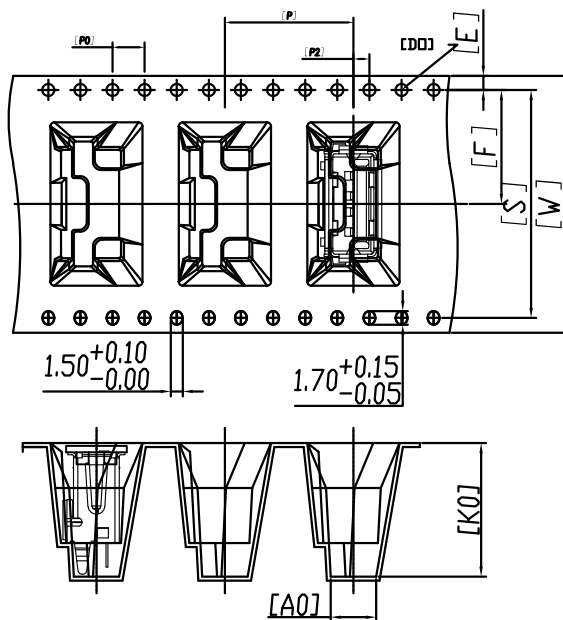
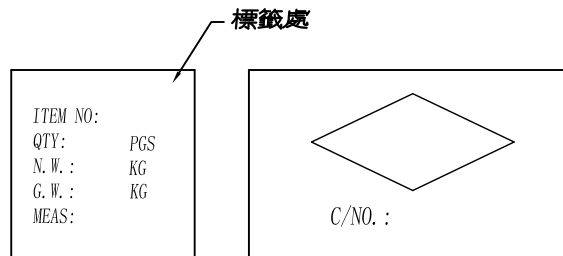
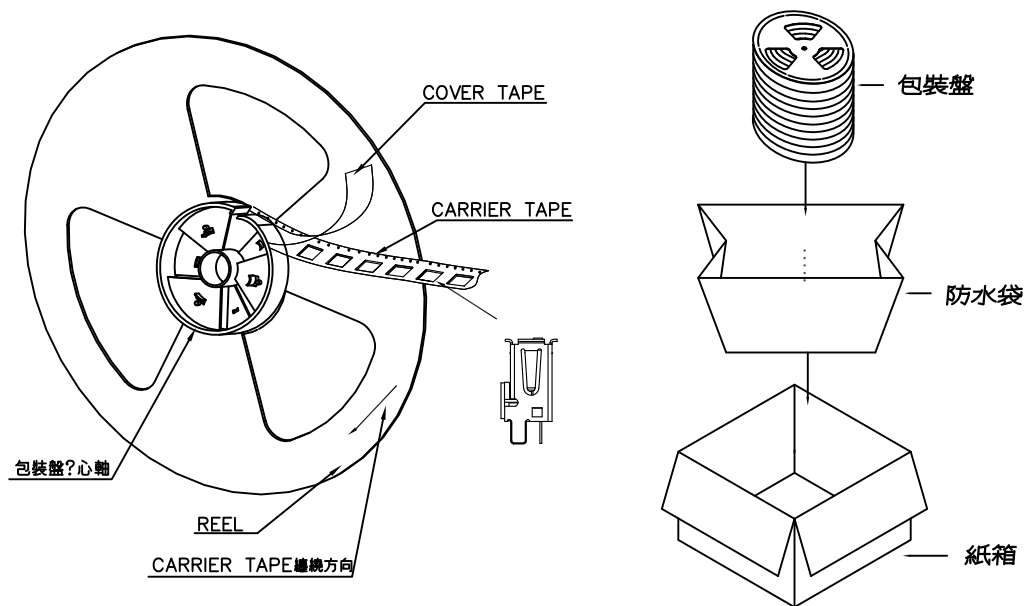
- 將成品一一放入包裝盤內,依同一方向置入。
- 包裝方式,如圖所示。
- 一個包裝盤內放200pcs.

步驟二:

- 一個紙箱可以裝10個包裝盤。
- 每盤200pcs,每箱2000pcs.
- 將包裝盤放入防水袋中,包裝完後再封箱。

步驟三:

- 用膠帶將紙箱封實。
- 將標籤貼於紙箱上。



ITEM	SPEC
W	32.00 +0.30 -0.30
Ao	5.66 +0.10 -0.10
Bo	15.56 +0.10 -0.10
Ko	16.65 +0.10 -0.10
P	16.00 +0.10 -0.10
F	14.20 +0.10 -0.10
E	1.75 +0.10 -0.10
D0	1.50 +0.10 -0.00
Po	4.00 +0.10 -0.10
P2	2.00 +0.10 -0.10
t	0.50 +0.05 -0.05

NOTE:

- 若有未裝滿之零數箱,必須以緩衝材塞滿。
- 在搬運過程中要輕拿輕放。
- 載運輸中不可堆放過多,不可有重壓現象。
- 在裝滿產品後,必須空留帶前和帶後15格以上,然後用紙膠布貼上。
- 上帶在貼下帶時必須平整,且黏貼處不要出現氣泡。

DRAWN	Mark Kao	APP'D	Ku Chou	UNIT	mm	TOLERANCE		TITLE	USB 4P A (F)180度 DIP直腳			SHEET	2/2
CHK'D	Emily Suen			SCALE	1:1	.x ±0.20 .xx ±0.10 .xxx ±0.05 .xxxx ±0.03 ANGULA ±1°		PART NO.	US-04F3-29-11	DWG NO.	QC7673	VERSION	A

NIAN YEONG ENTERPRISE
年永實業有限公司