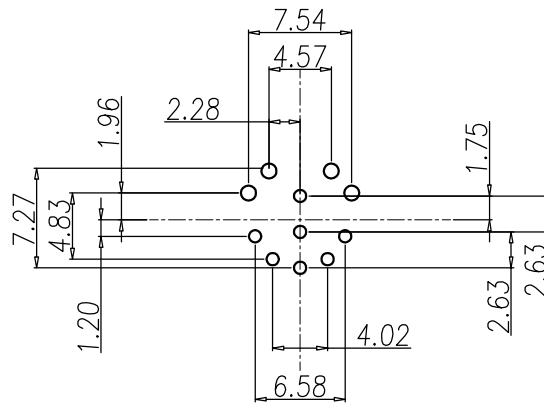
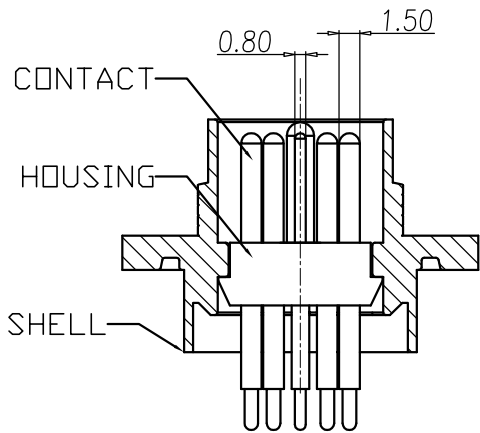
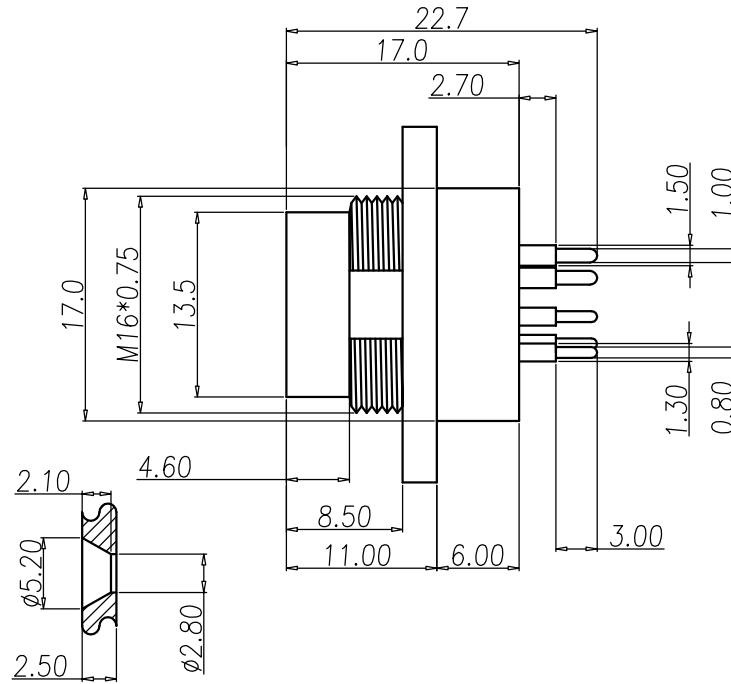
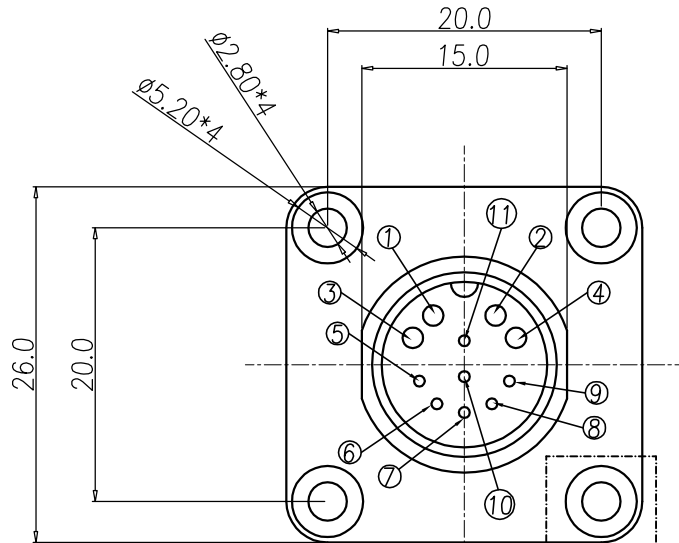


This document is the property of Nian-Yeong Corporation and is delivered on the express condition that it is not to be disclosed, reproduced or used, in whole or in part, for manufacture or sale by anyone other than Nian-Yeong Corporation without its prior consent, and that no right is granted to disclose or to use any information in this document.

# CUSTOMER DRAWING

REV.	DESCRIPTION	APPROVED BY	DATE	ECN NO.
A	RELEASE	Fido Weng	15/08/11'	
B				
C				



RECOMMEND P.C.B LAYOUT

- MATERIAL :
  - 1-1. HOUSING : PA66 UL94V-2 ; COLOR : BLACK
  - 1-2. CONTACT : BRASS
  - 1-3. SHELL : ZIAC ALLOY.
- FINISH :
  - 2-1. CONTACT : GOLD FLASH MICRO INCHES MIN. UNDER PLATE : NICKEL
  - 2-2. SHELL : Satin Nickel PLATED.
- ELECTRICAL SPECIFICATION :
  - 3-1. Rated current : 10A+1A
  - 3-2. Rated Voltage : 250V+125V
- Environmental :
  - 4-1. Operation Temperature : -40 °C~85°C

DRAWN	CU	APPEND	Emily Suen	UNIT	mm	TOLERANCE		TITLE	DIN M16 11P (M) 10A+1A			SHEET	
CHOKED	Emily Suen			SCALE	1:1	.x ±0.20 .xx ±0.10 .xxx ±0.05 .xxxx ±0.03 ANGULA ±1°			PART NO.	DI-11M3-01	DWG NO.	QC5432	VERSION A

