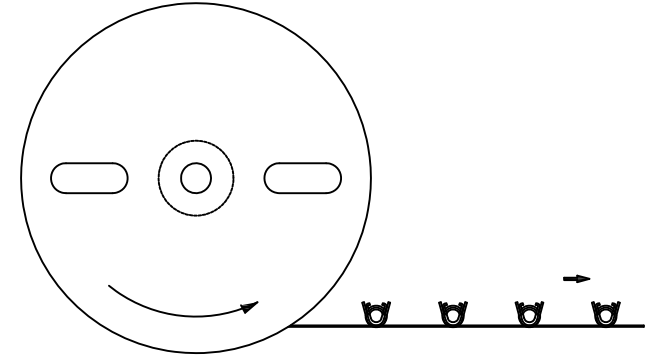
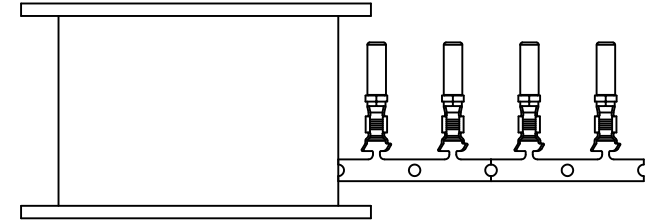
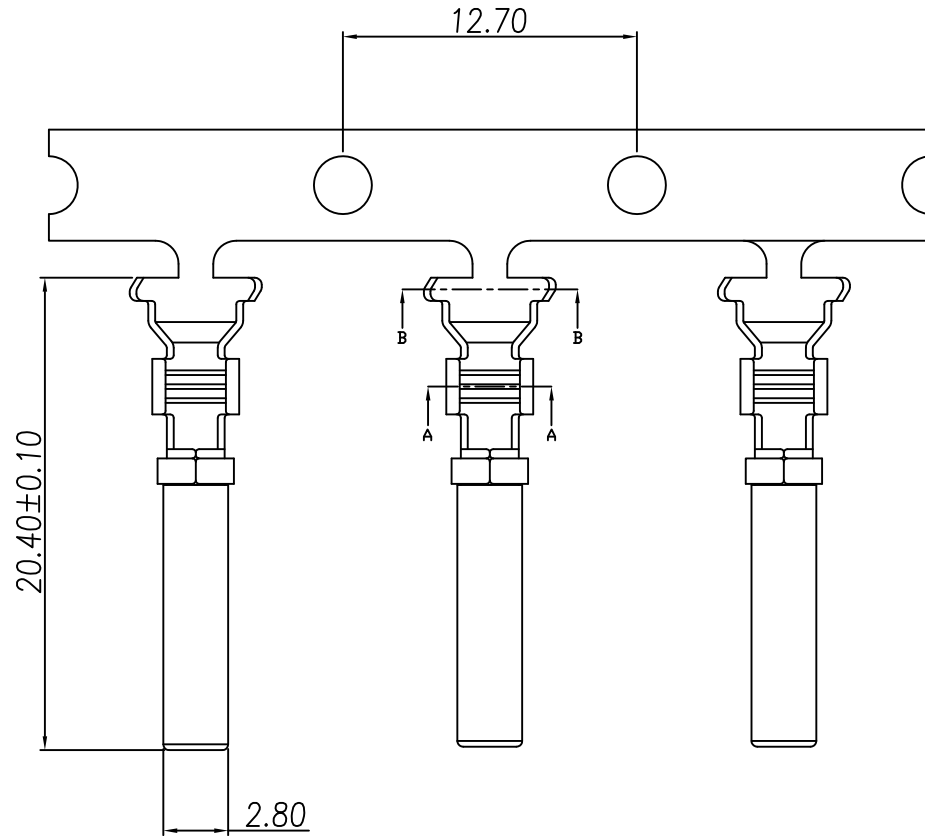


This document is the property of Nian-Yeong Corporation and is delivered on the express condition that it is not to be disclosed, reproduced or used, in whole or in part, for manufacture or sale by anyone other than Nian-Yeong Corporation without its prior consent, and that no right is granted to disclose or to use any information in this document.

CUSTOMER DRAWING

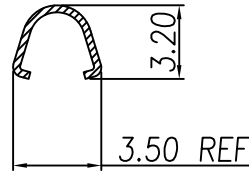
| REV. | DESCRIPTION | APPROVED BY | DATE       | ECN NO. |
|------|-------------|-------------|------------|---------|
| A    | RELEASE     | Yeh Chou    | 2017/xx/xx |         |
| B    |             |             |            |         |
| C    |             |             |            |         |
| D    |             |             |            |         |



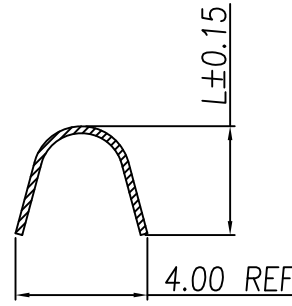
PULL OUT DIRECTION

TABLE A

|             |     |   |
|-------------|-----|---|
| NY-WP699-11 | 4.6 | 防水頭9PIN(F)端子半成品(Crimp PIN)(表金)              |
| NY-WP375    | 4.6 | 防水頭9PIN(F)端子半成品(Crimp PIN)(TIN 80u")        |
| NY-WP514    | 3.4 | 防水頭9PIN(F)端子半成品(Crimp PIN)(短線夾)(TIN 80u")   |
| NY-WP927-10 | 3.4 | 防水頭9PIN(F)端子半成品(Crimp PIN)(短線夾)(GOLD FLASH) |
| P/N         | L   | TITLE                                       |



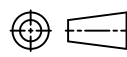
SECTION A-A



SECTION B-B

- MATERIAL :
  - 1-1. CONTACT : PHOSPHOR BRONZE
  - 1-2. SHELL : STAINLESS STEEL
- FINISH :
  - 2-1. CONTACT : SEE TABLE A

|       |          |       |         |       |     |  |
|-------|----------|-------|---------|-------|-----|--|
| DRAWN | Yeh Chou | APP'D | Ku Chou | UNIT  | mm  | TOLERANCE  |
| CHK'D | Yeh Chou |       |         | SCALE | 1:1 | .x ±0.20<br>.xx ±0.10<br>.xxx ±0.05<br>.xxxx ±0.03<br>ANGULA ±1° |



NIAN YEONG ENTERPRISE  
年永實業有限公司

|          |                            |         |        |         |     |
|----------|----------------------------|---------|--------|---------|-----|
| TITLE    | 防水頭9PIN(F)端子半成品(Crimp PIN) |         |        | SHEET   | 1/1 |
| PART NO. | SEE TABLE A                | DWG NO. | QC5426 | VERSION | A   |