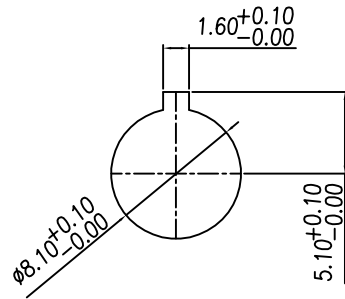


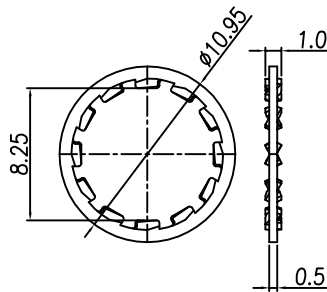
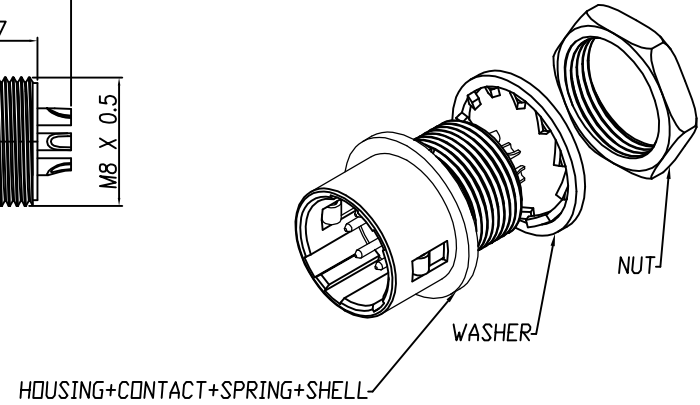
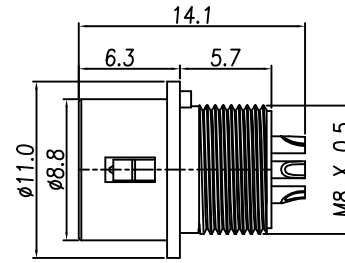
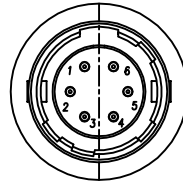
This document is the property of Nian-Yeong Corporation and is delivered on the express condition that it is not to be disclosed, reproduced or used, in whole or in part, for manufacture or sale by anyone other than Nian-Yeong Corporation without its prior consent, and that no right is granted to disclose or to use any information in this document.

CUSTOMER DRAWING

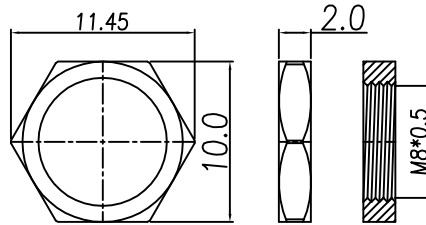
| REV. | DESCRIPTION | APPROVED BY | DATE | ECN NO. |
|------|-----------------|-------------|-----------|---------|
| A | RELEASE | Emily Suen | 22/11/11' | |
| B | CHANGE MATERIAL | Emily Suen | 19/09/22' | |
| C | | | | |
| D | | | | |



RECOMMENDED MOUNTING HOLE
(Panel thickness 0.7~2)



WASHER



NUT

TABLE A

| CONTACT ARRANGEMENT(FRONT VIEW) | | | |
|---------------------------------|------------|------------|------------|
| | | | |
| DI-04M2-06 | DI-05M2-04 | DI-06M2-05 | DI-07M2-02 |

1. MATERIAL :

- A 1-1. HOUSING : NYLON66 UL94V-0; COLOR : BLACK
- 1-2. CONTACT : BRASS
- 1-3. SHELL : ZINC ALLOY
- 1-4. SPRING : STAINLESS STEEL
- 1-5. WASHER : PHOSPHOR BRONZE
- 1-6. NUT : BRASS

2. FINISH :

- 2-1. CONTACT : GOLD FLASH
- 2-2. SHELL : NICKEL
- 2-3. WASHER : NICKEL
- 2-4. NUT : NICKEL

3. ELECTRICAL SPECIFICATION :

- 3-1. Rated current : 2A
- 3-2. Rated voltage : 4PIN 150V AC / 200V DC ;
5~7PIN 100V AC / 140V DC

4. Environmental :

- 4-1. Operation Temperature : -25°C~85°C

| | | | | | | | | | | | | | | |
|-------|------------|-------|---------|-------|-----|--|--|--|----------|--|---------|--------|---------|--|
| DRAWN | Mark Kao | APPVL | Ku Chou | UNIT | mm | TOLERANCE | | | TITLE | DIN (M) RECEPTACLE 鑰匙/鑰匙插式(SHELL SIZE 7mm) | | | SHEET | |
| CHK'D | Emily Suen | | | SCALE | 1:1 | .x ±0.20 .xx ±0.10 .xxx ±0.05 .xxxx ±0.03 ANGULA ±1° | | | PART NO. | SEE TABLE A | DWG NO. | QC5664 | VERSION | |

NIAN YEONG ENTERPRISE
年永實業有限公司