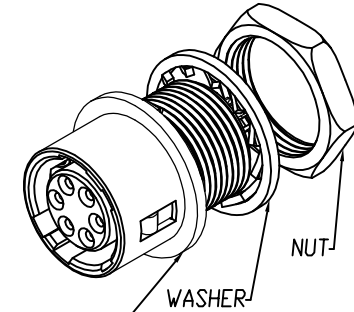
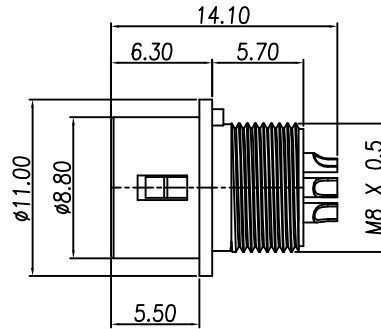
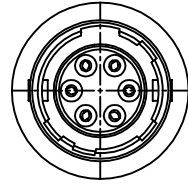
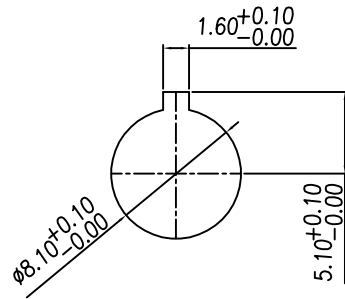


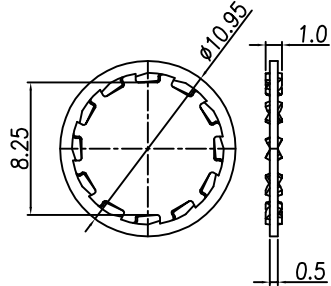
This document is the property of Nian-Yeong Corporation and is delivered on the express condition that it is not to be disclosed, reproduced or used, in whole or in part, for manufacture or sale by anyone other than Nian-Yeong Corporation without its prior consent, and that no right is granted to disclose or to use any information in this document.

# CUSTOMER DRAWING

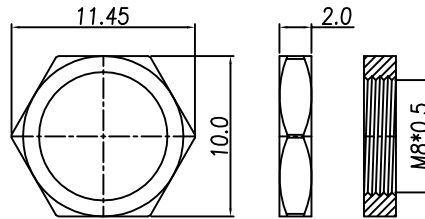
REV.	DESCRIPTION	APPROVED BY	DATE	ECN NO.
A	RELEASE	Emily Suen	22/11/11'	
B	CHANGE MATERIAL	Emily Suen	19/09/22'	
C				
D				



RECOMMENDED MOUNTING HOLE  
(Panel thickness 0.7~2)



WASHER



NUT

HOUSING+CONTACT+SPRING+SHELL

NOTE:

- MATERIAL :
  - 1-1. HOUSING : NYLON66 UL94V-0; COLOR : BLACK
  - 1-2. CONTACT : PHOSPHOR BRONZE
  - 1-3. SHELL : ZINC ALLOY
  - 1-4. SPRING : STAINLESS STEEL
  - 1-5. WASHER : PHOSPHOR BRONZE
  - 1-6. NUT : BRASS
- FINISH :
  - 2-1. CONTACT : GOLD FLASH
  - 2-2. SHELL : NICKEL
  - 2-3. WASHER : NICKEL
  - 2-4. NUT : NICKEL
- ELECTRICAL SPECIFICATION & MECHANICAL PERFORMANCE
  - 3-1. Rated current : 2A
  - 3-2. Rated voltage : 4PIN 150V AC / 200V DC ; 5~7PIN 100V AC / 140V DC
  - 3-3. Insulation resistance : 1,000MΩ Min.
  - 3-4. Contact resistance : 10mΩ Max.
  - 3-5. Withstanding voltage : 4PIN AC500V for a minute ; 5.6.7PIN AC300V for a minute
  - 3-6. Solder Wire Spec : 26AWG~28AWG
  - 3-7. Durability : 500 cycles
- Environmental :
  - 4-1. Operation Temperature : -25°C~85°C

TABLE A

CONTACT ARRANGEMENT(FRONT VIEW)

DI-04F2-05	DI-05F2-02	DI-06F2-06	DI-07F2-02

DRAWN	Mark Kao	APPVL	Ku Chou	UNIT	mm	TOLERANCE			<b>NIAN YEONG ENTERPRISE</b> 年永實業有限公司	TITLE	DIN (F) RECEPTACLE 鍍銀/鍍鎳鍍金式(SHELL SIZE 7mm)			SHEET	
CHK'D	Emily Suen			SCALE	1:1	.x ±0.20 .xx ±0.10 .xxx ±0.05 .xxxx ±0.03 ANGULA ±1°				PART NO.	SEE TABLE A	DWG NO.	QC5665	VERSION	